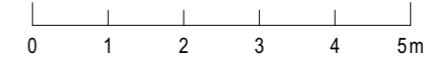
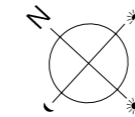
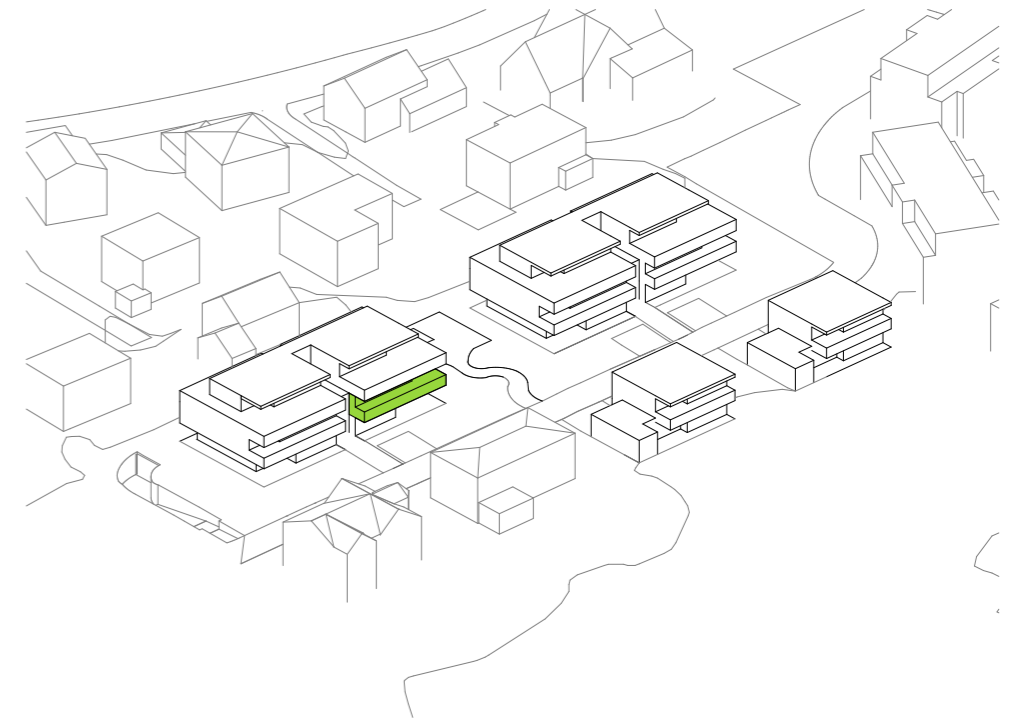


# Dreilinden

Sittipark, 8589 Sitterdorf



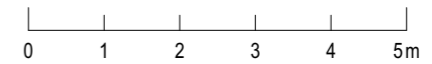
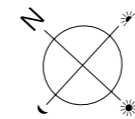
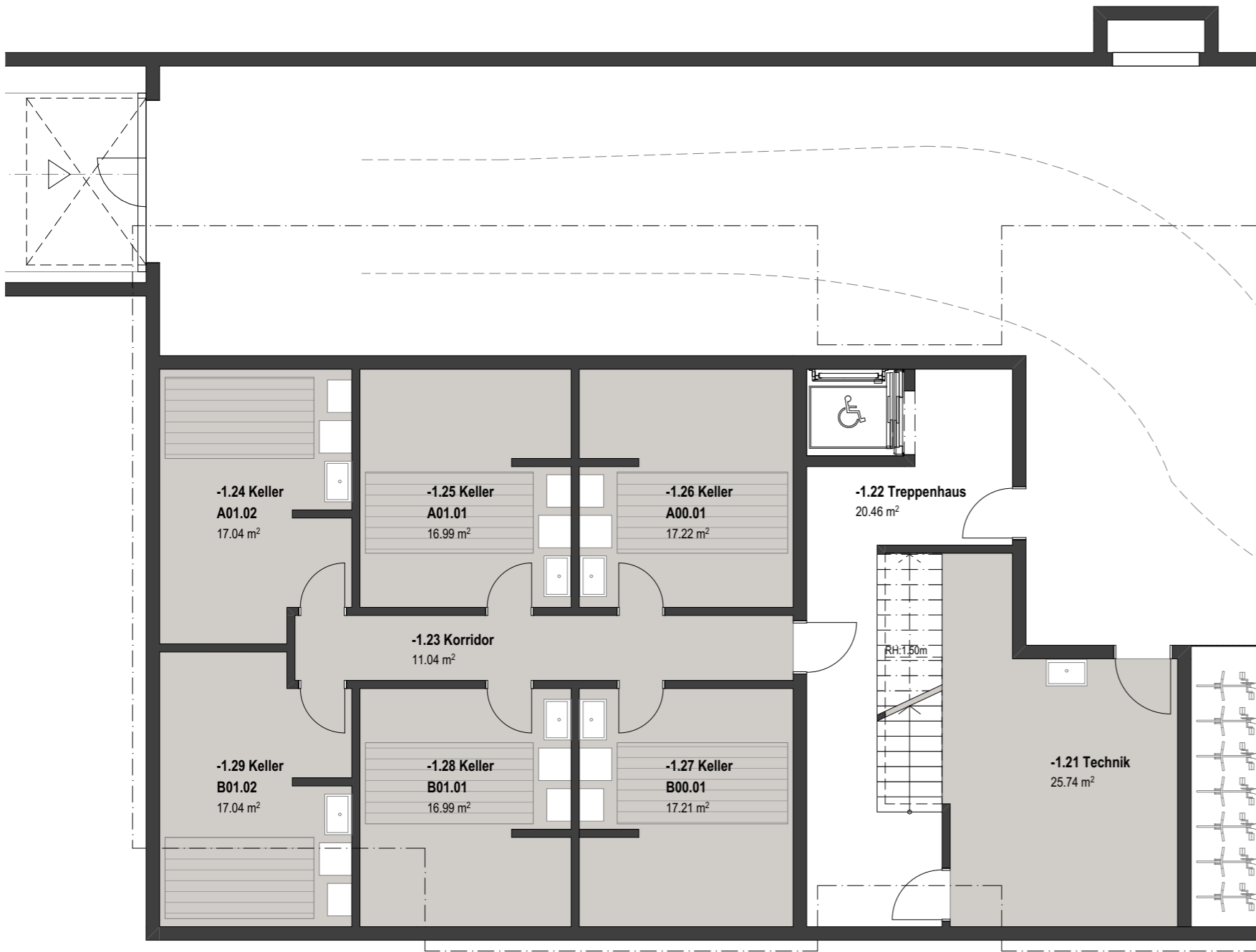
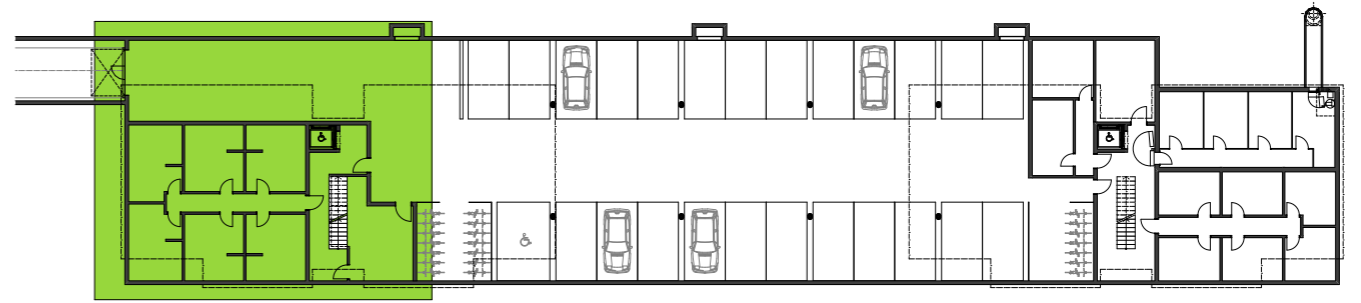
## 3.5-Zimmer Wohnung Wohnungsnummer B01.01

Haus B - Obergeschoss

Bruttowohnfläche:	96.53 m <sup>2</sup>
Nettowohnfläche:	90.97 m <sup>2</sup>
Terrasse:	27.32 m <sup>2</sup>

# Dreilinden

Sittipark, 8589 Sitterdorf



**Untergeschoss  
Haus A & B**  
Nebenräume